

**Mounting Instructions  
With Parts Listing and Drawings  
For**

# **FREDRICKS FAMILY 9**

## **2-POST FOLDING ROLLBAR**

**Part No.  
A-11383**

Manufactured by:



BOX 718 • LITCHFIELD, MINNESOTA 55355

Ph: (320) 693-3221 Fax: (320) 693-7252

1-800-222-5463

[www.800cabline.com](http://www.800cabline.com)

# INSTALLATION INSTRUCTIONS FOR ROLLOVER PROTECTION SYSTEM (ROPS)

This manual contains assembly, operating, maintenance and safety instructions for your ROPS. Before installing the ROPS or operating a machine equipped with a ROPS, carefully read these instructions completely. The ROPS will reduce the risk of serious or fatal injury in the unlikely event of a tip over although the system cannot protect the operator from all possible injuries. By following the operating, maintenance, and safety instructions, you will prolong the life of the machine and the ROPS, maintain its maximum efficiency and promote safe operation.

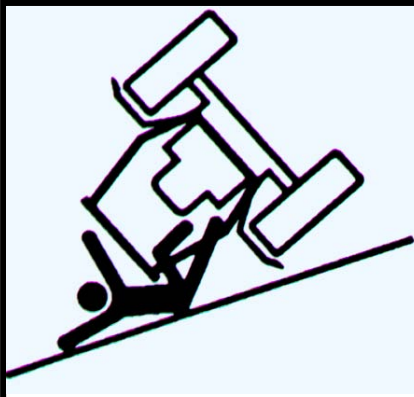
If additional information is needed, contact your authorized equipment dealer or distributor. **Keep this manual with the operator's manual for the machine for future reference.**

## IMPORTANT:

1. Do not cut, drill, modify or repair ROPS in any manner.
2. Always replace a damaged ROPS.
3. Always use the seatbelt and ROPS together.
4. Frequently inspect rollbar and seat belts for damage or loose hardware.
5. Use extreme care when working close to fences, ditches, trees and on hills.
6. Check overhead clearances carefully before driving under any objects.
7. Do not leave operator's position while unit is running.
8. Do not carry riders.

## WARNING!

This ROPS is certified for use on machines with a maximum gross vehicle weight (GVW) of 6,000 lbs. The GVW INCLUDES the weight of the base machine, operator, fuel, ROPS, and other attachments and payloads. When attachments are added, causing the GVW of the machine to be more than 6,000 lbs., the ROPS may not provide adequate protection resulting in serious injury or death. Use caution when installing attachments and **DO NOT EXCEED** the GVW rating of the ROPS.



## WARNING!

### SERIOUS INJURY OR DEATH MAY RESULT FROM MACHINE ROLLOVER

- DO NOT OPERATE MACHINE ON STEEP SLOPES OR NEAR DROP OFFS
- ALWAYS USE SEAT BELTS
- AVOID SHARP AND/OR QUICK TURNS
- DO NOT EXCEED THE MACHINE WEIGHT RATING OF THE ROPS

## WARNING

ROLLOVER MAY CAUSE PERMANENT INJURY OR DEATH.

- ROPS RAISES THE CENTER OF GRAVITY AND REDUCES STABILITY ON SLOPES.
- SUDDEN STARTS OR TURNS ON RAMPS OR SLOPES CAN CAUSE OVERTURN.
- USE GREATER CARE ON RAMPS AND AS THE SLOPE INCREASES.

## **MOUNTING INSTRUCTIONS**

### **2-Post Folding Rollbar A-11383 Family 9**

#### **Machine Preparation**

- 1) Park the tractor on a level surface and set the brakes.

#### **Lower ROPS Leg Weldments Installation (Refer to Figure 1A & 1B for Steps 2-7)**

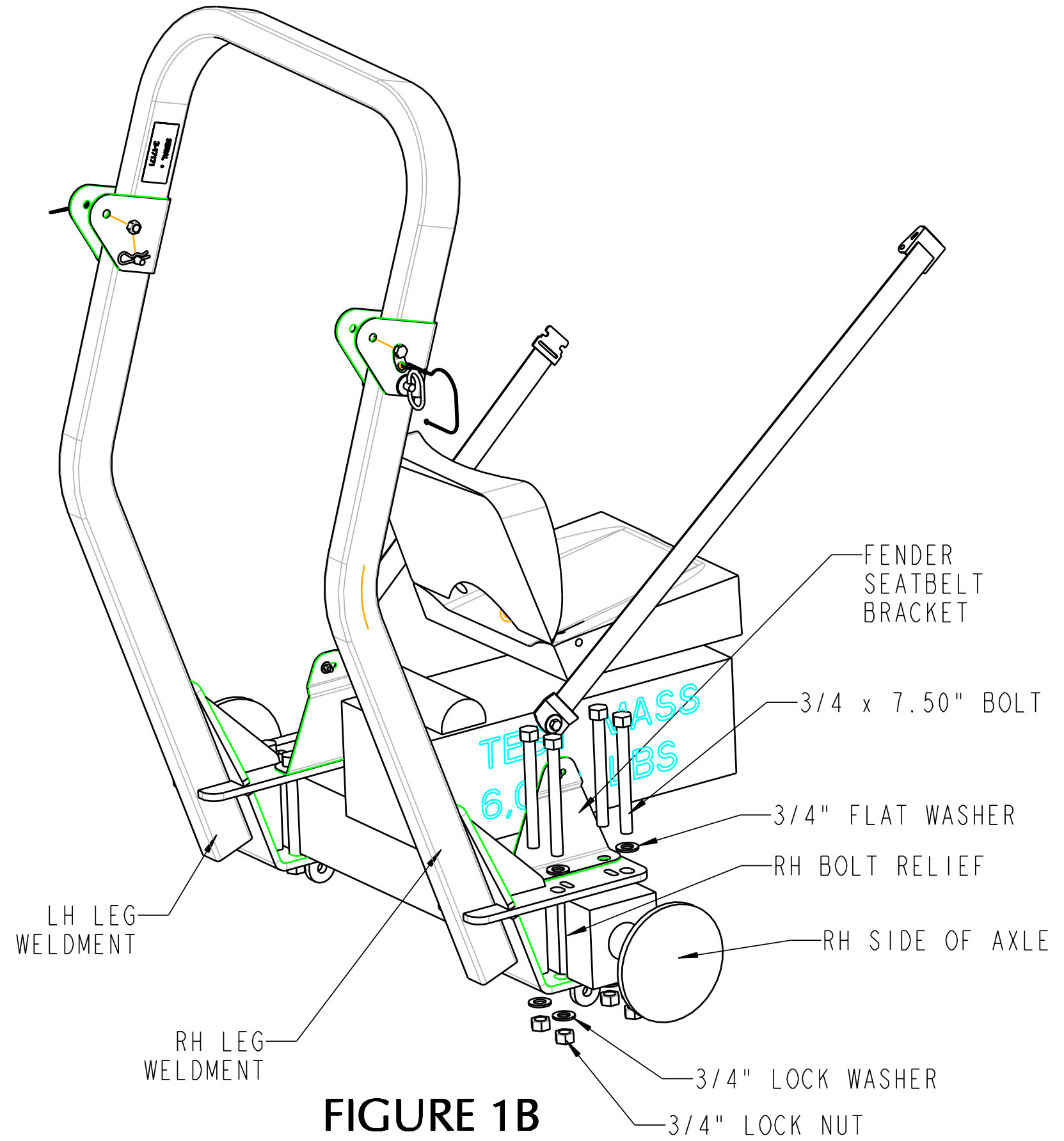
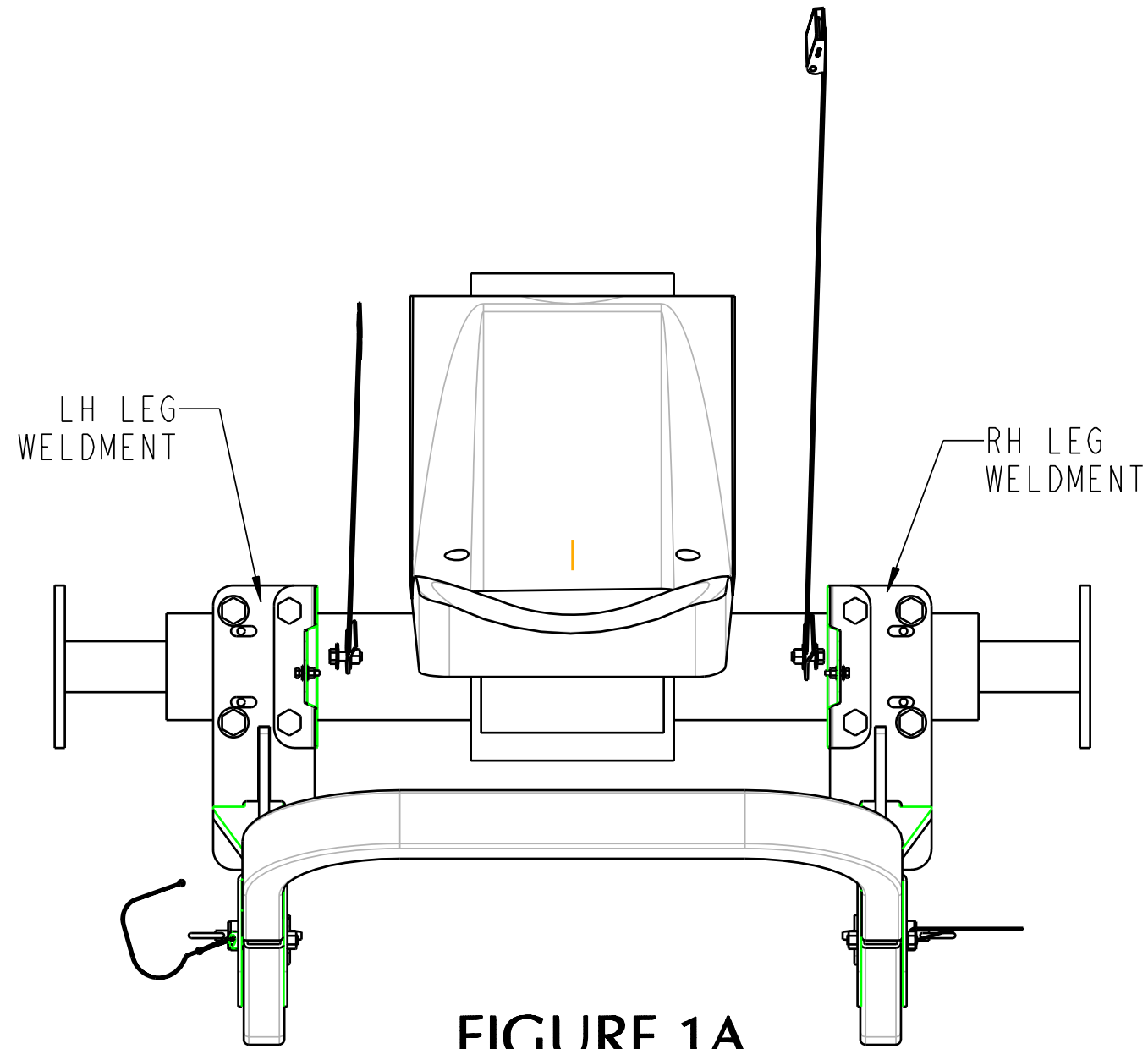
- 2) Tighten all mounting hardware later in Step 11.
- 3) Leg weldments are identical. Select one leg and mount onto axle. See Figure 1A.
- 4) Remove bottom fender mount bracket that attaches the bottom of fender to axle.
- 5) Locate the bolt reliefs on each side of the axle casting. Align right hand leg weldment with right side bolt relief's on axle. Secure using (4)  $\frac{3}{4}$ - x 7.50" long bolts, (6)  $\frac{3}{4}$ " flat washers, (1) fender seatbelt mount bracket and (4)  $\frac{3}{4}$ " lock nuts, supplied with the ROPS hardware kit. See Figure 1B.
- 6) Secure bottom of fender to fender/seat belt bracket using (1)  $\frac{1}{4}$ " x 1 hex head bolt, (2)  $\frac{1}{4}$ " flat washers and (1)  $\frac{1}{4}$ " nylock nut.
- 7) Repeat step 3 for the left leg weldment for the left side.

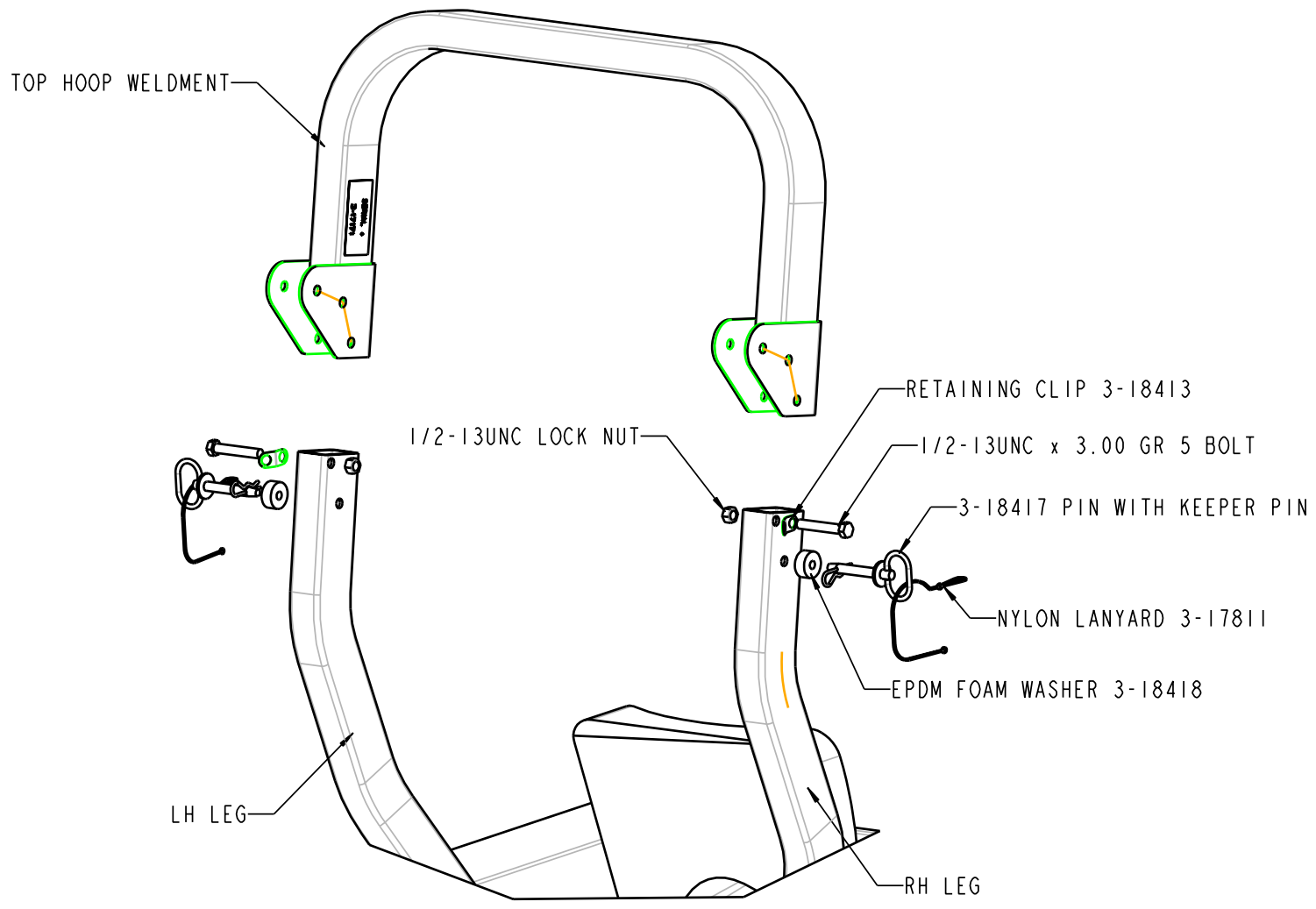
#### **Upper Hoop Installation (Refer to Figure 2 for Steps 8-11)**

- 8) Install the upper rollbar hoop. Secure each side of hoop with a  $\frac{1}{2}$ -13unc x 3.00 grade 5 bolt, a pin retainer washer and a  $\frac{1}{2}$ -13unc grade 5 center-lock nut into the upper mount hole. Tighten only until the nut contacts the bracket. Do not over tighten. Hoop should pivot freely, up and down. See Figure 2.
- 9) Install (1) EPDM washer onto each of the hitch pins. Position the top hoop into the up-right location and install the hitch pins. See Figure 2.
- 10) Attach (1) plastic lanyard to the handle of each hitch pin. Insert one end of the lanyard through the retaining washer and attach the spring pin to the eye in the lanyard. Install the spring pins into the hitch pins.
- 11) Tighten lower ROPS legs hardware at this time.

#### **Seatbelt Installation (Refer to Figures 3 & 4)**

- 12) Layout and drill (1)  $\frac{1}{2}$ " diameter hole through each fender as shown in Figure 3.
- 13) Install the seat belt to each fender using (2) 7/16-14unc x 1.25 grade 5 bolts, (4) 7/16" flat washers and (2) 7/16-14unc grade 5 nylock nuts.





**FIGURE 2**

Mounting Instructions  
2-Post Folding Rollbar A-11383 Family 9

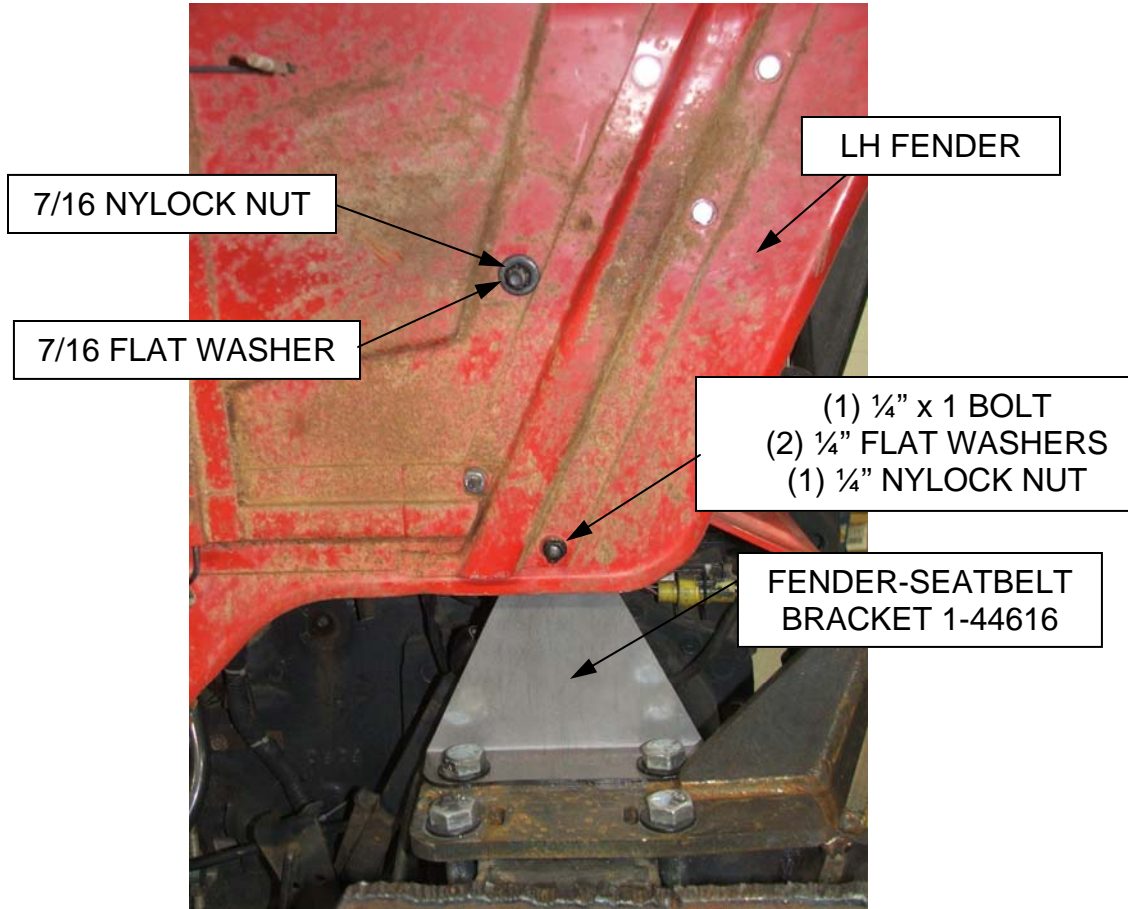


Figure 3

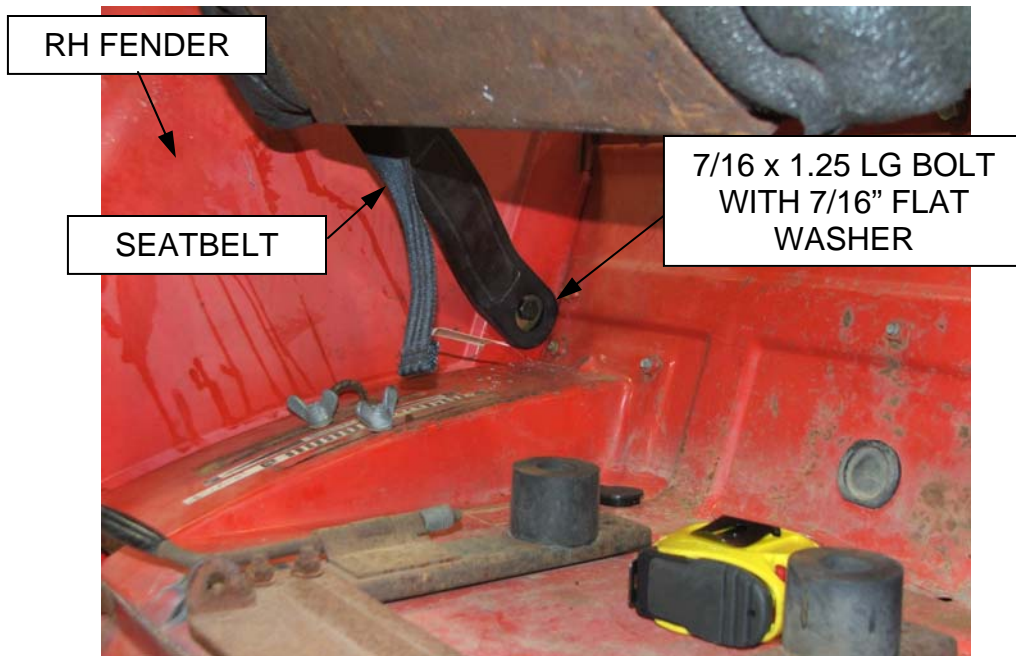
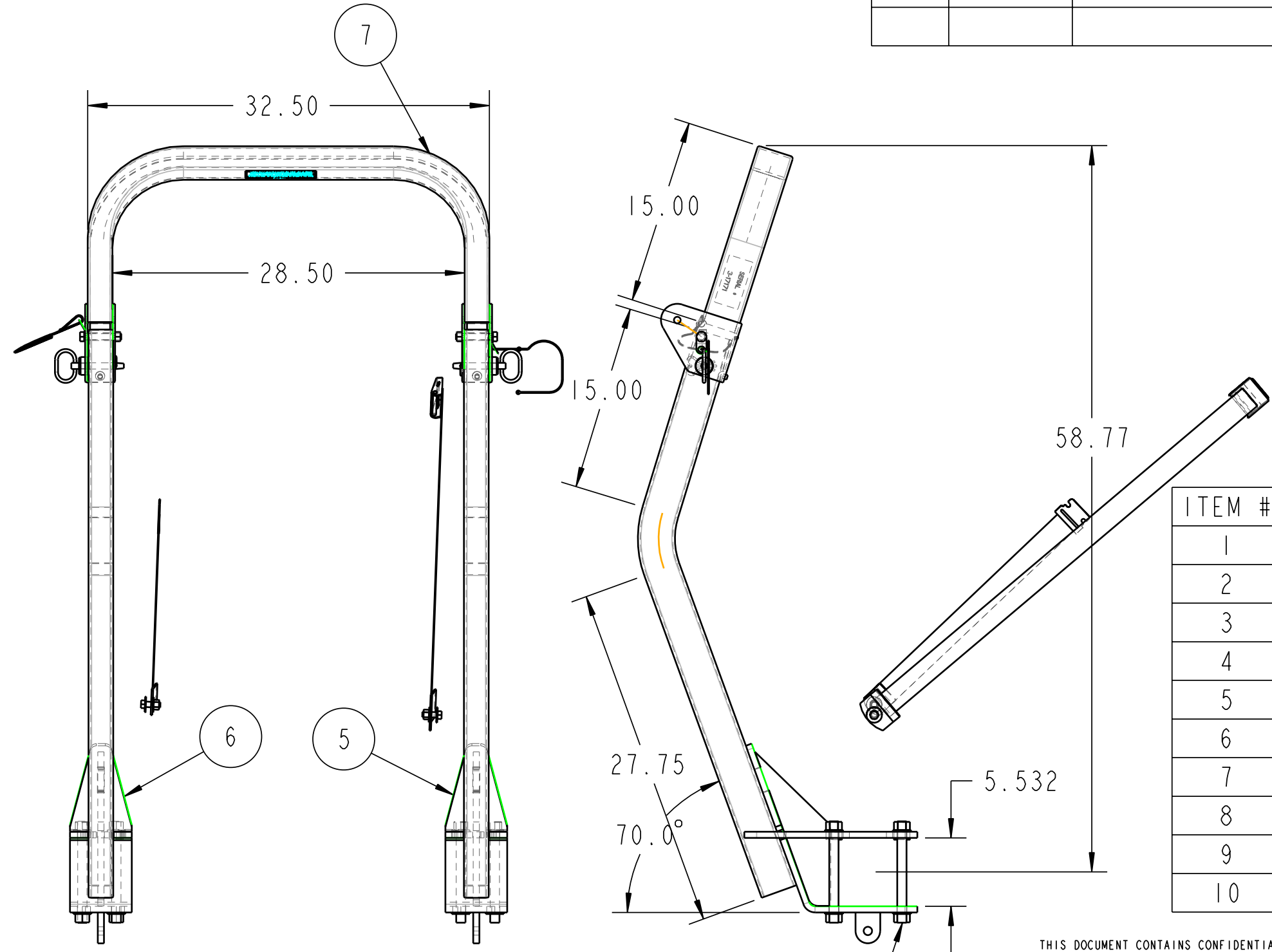


Figure 4

NAME: CAD2 OBJECT: A-11383 DATE: 09-Dec-05 09:55:33

REV.	DCR NO.	DESCRIPTION	DRAFTSMAN	DATE
				12-7-05



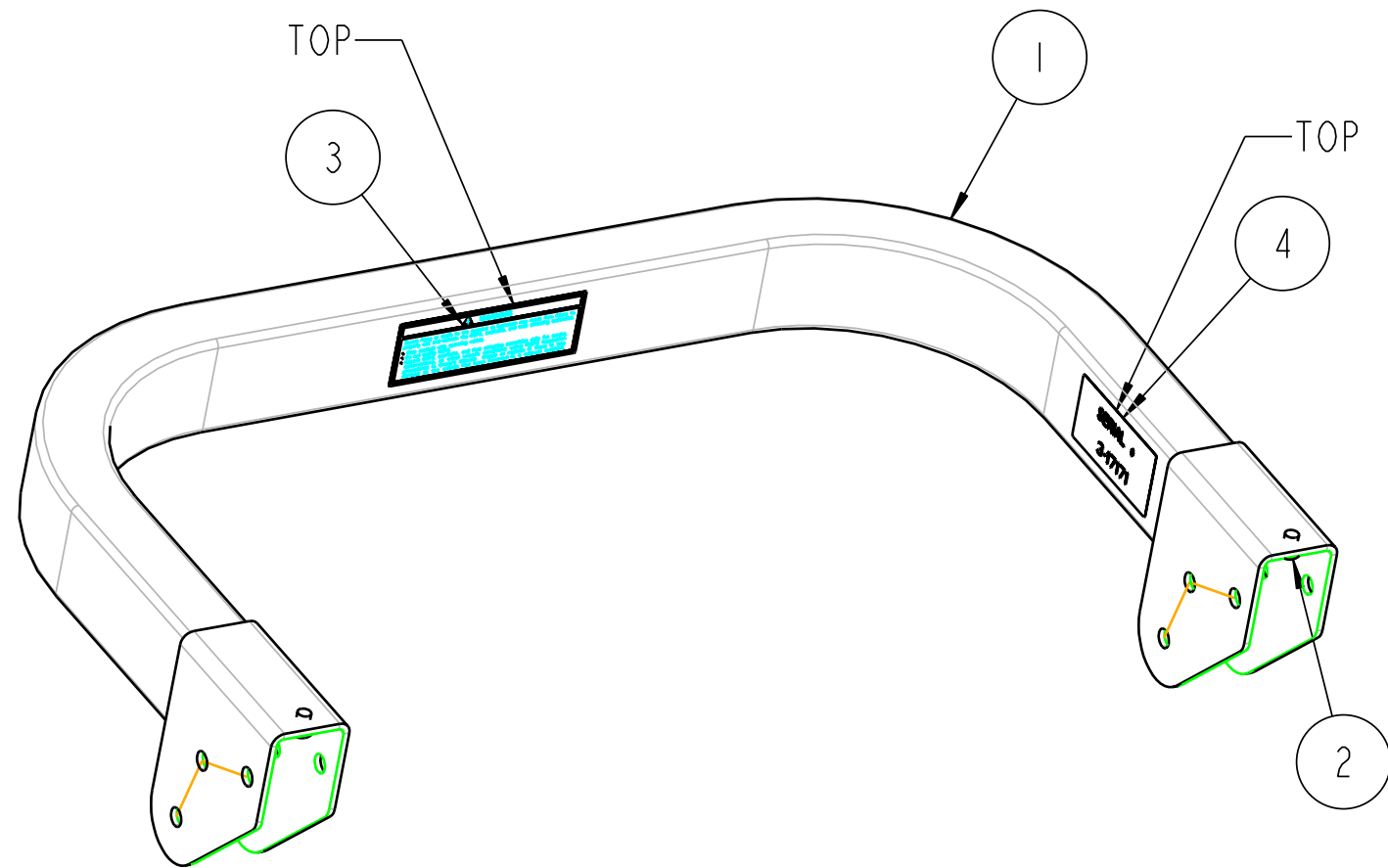
SCALE 0.100

ITEM #	DESCRIPTION	QTY
1	REF_FRAME_FAM_9	1
2	YANMAR_T	1
3	REF_SEAT_YANMAR_	1
4	MALE95	1
5	2-16088_LEG_WELDMENT	1
6	2-16094_LEG_WELDMENT_LH	1
7	4-15012_UPPER_HOOP_ASM_REF	1
8	4-15034_HARDWARE_KIT	1
9	3-17913_PAINT_BLK_POWDER_24	SEE BOM
10	05-10570_LABEL_SHIPPING	SEE BOM

THIS DOCUMENT CONTAINS CONFIDENTIAL INFORMATION AND IS THE PROPERTY OF CUSTOM PRODUCTS OF LITCHFIELD, INC. AND MAY NOT BE COPIED, REPRODUCED OR DISCLOSED IN ANY MANNER WITHOUT EXPRESSED WRITTEN CONSENT FROM CUSTOM PRODUCTS OF LITCHFIELD, INC.

<b>TOLERANCES UNLESS NOTED OTHERWISE</b>  .X ± .09 .XX ± .06 .XXX ± .03 HOLE SIZE +.05/-.010 ANGLE ± .5°	<b>CUSTOMER NAME &amp; MOD NO.:</b> FREDRICKS YANMAR FAM 9	<b>MATL SPEC:</b>
	<b>CUSTOM PRODUCTS</b> 1715 SOUTH SIBLEY AVE. LITCHFIELD, MN 55355	
<b>TITLE</b>  2-POST FOLDING ROPS	<b>DRWG SIZE</b> <b>B</b>	<b>DRWG NO.</b> A-11383
	<b>DATE</b> 12-7-05	<b>REV LEVEL</b> -

REV.	DCR NO.	DESCRIPTION	DRAFTSMAN	DATE
				12-7-05



SCALE 0.200

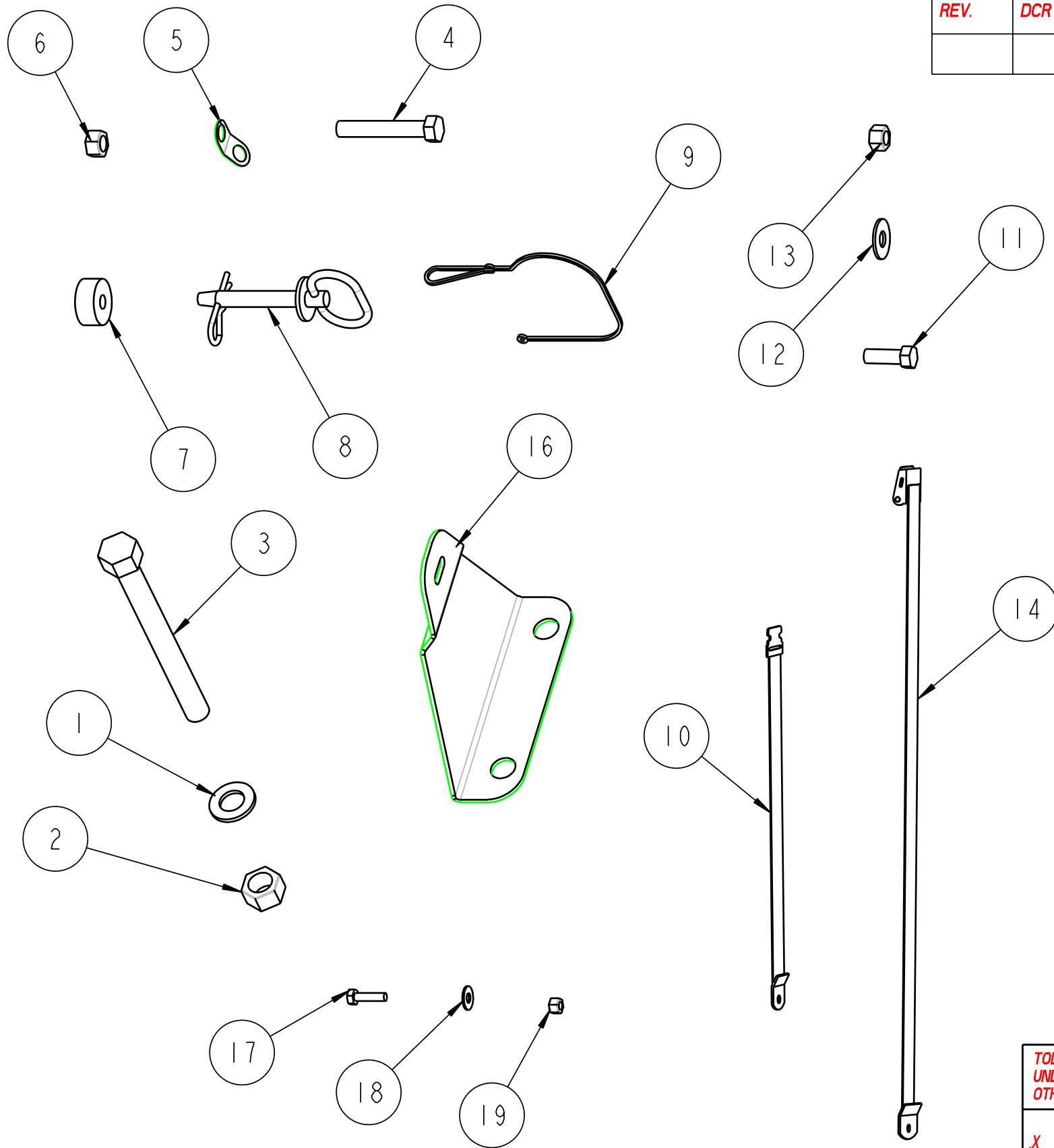
ITEM #	DESCRIPTION	QTY
1	2-16049_UPPER_HOOP_WELDMENT	1
2	3-14595_RUBBER BUMPER	2
3	3-17891_WARNING_DECAL	1
4	3-17171_DECAL_CP_SERIAL_NUMBER	1

ID NUMBER	CUSTOMER-MODEL	QTY REQ'D
A-11381	FREDRICKS FAM 8	1
A-11383	FREDRICKS FAM 9	1

THIS DOCUMENT CONTAINS CONFIDENTIAL INFORMATION AND IS THE PROPERTY OF CUSTOM PRODUCTS OF LITCHFIELD, INC. AND MAY NOT BE COPIED, REPRODUCED OR DISCLOSED IN ANY MANNER WITHOUT EXPRESSED WRITTEN CONSENT FROM CUSTOM PRODUCTS OF LITCHFIELD, INC.

<b>TOLERANCES UNLESS NOTED OTHERWISE</b>  X ± .09 .XX ± .06 .XXX ± .03 HOLE SIZE +.015/-0.010 ANGLE ± 5°	<b>CUSTOMER NAME &amp; MOD NO.:</b> A-11381 & A-11383		<b>MATL SPEC.:</b>	
	<b>CUSTOM PRODUCTS</b> 1715 SOUTH SIBLEY AVE. LITCHFIELD, MN 55355		<b>DRWG SIZE</b> B	<b>DRWG NO.</b> 4-15012
<b>TITLE:</b> TOP HOOP ASM			<b>REV LEVEL</b> -	<b>DATE</b> 8-24-05
<b>DRAWN:</b> CAD		<b>DATE</b> 8-24-05		

NAME: CAD2 OBJECT: 4-15034 DATE: 24-Jan-06 10:20:53



REV.	DCR NO.	DESCRIPTION	DRAFTSMAN	DATE
				01-24-06

ITEM #	DESCRIPTION	QTY
1	3-17068_WASHER_75_HARDENED	12
2	3-17383_75_NUT_HEX_GR8	8
3	3-18520_HHCS_75-10NC_X_7_50LG	8
4	3-10131_50_HHCS_X300	2
5	3-18413_WASHER_FORMED_RETAIN_50	2
6	3-10485_50_NUT_HEX_CNTRLOCK	2
7	3-18418_WASHER_EPDM_500	2
8	3-18417_HITCH_PIN_500	2
9	3-17811_LANYARD_NYLON_180_LOOP	2
10	3-10287_SEAT_BELT_1	1
11	3-10026_44_HHCS_X125	2
12	3-10166_4375_WASHER	4
13	3-10472_4375_NYLOCK	2
14	3-10287_SEAT_BELT_2	1
15	05-10570_MOUNT_INSTR	SEE BOM
16	1-44616_SEAT_BELT_BRACKET	2
17	3-10220_25_HHCS_100	2
18	3-10084_250_WASHER	4
19	3-10070_25_NYLOCK	2

NOTE: PLACE ALL COMPONENTS WITH INSTRUCTIONS INTO BAG 3-18439

THIS DOCUMENT CONTAINS CONFIDENTIAL INFORMATION AND IS THE PROPERTY OF CUSTOM PRODUCTS OF LITCHFIELD, INC. AND MAY NOT BE COPIED, REPRODUCED OR DISCLOSED IN ANY MANNER WITHOUT EXPRESSED WRITTEN CONSENT FROM CUSTOM PRODUCTS OF LITCHFIELD, INC.

<b>TOLERANCES UNLESS NOTED OTHERWISE</b> .X ± .09 .XX ± .06 .XXX ± .03 HOLE SIZE +.05/-.010 ANGLE ± 5°	<b>CUSTOMER NAME &amp; MOD NO.:</b> A-11383 FAM 9		<b>MATL SPEC:</b>	
	<b>CUSTOM PRODUCTS</b> 1715 SOUTH SIBLEY AVE. LITCHFIELD, MN 55355			
<b>TITLE:</b> HARDWARE KIT		<b>DRWG SIZE:</b> B	<b>DRWG NO.:</b> 4-15034	<b>REV LEVEL:</b> -
		<b>DRAWN:</b> CAD	<b>DATE:</b> 11-16-05	